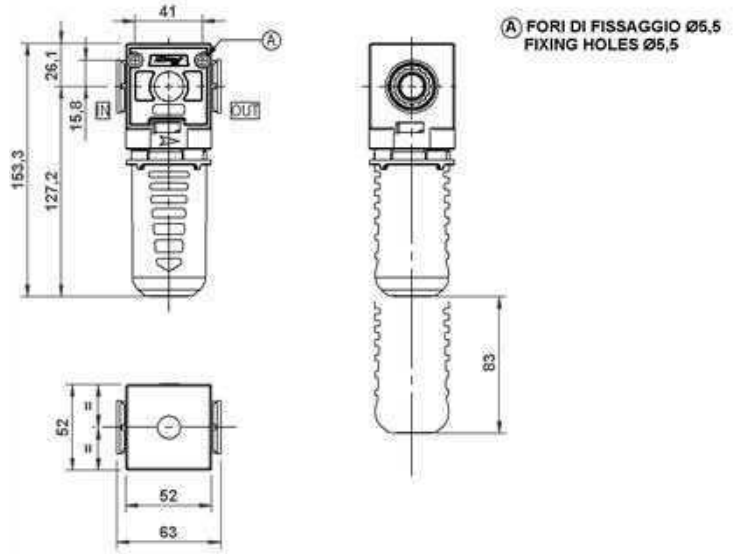


LINE 050 3/8-052 1/2 | CARBON FILTERS



GENERAL FEATURES

Aircomp activated carbon filter exploits the absorption properties of activated carbon in order to increase air purity and eliminate unpleasant smell in the air aimed at the industrial sector. The activated carbon filter, in order to guarantee its performance, needs to be associated with a coalescing filter, that should be preceded by a 5 Micron filter (F+MF+CF). It can be wall mounted through the holes prearranged on the body. Closed bowl (without drain) made from hardened polyamide with outer guard.

GENERAL TECHNICAL DATA

Fluid	compressed air
INLET-OUTLET connections	Line 050 3/8" - Line 052 1/2"
Maximum inlet pressure	12,5 Bar
Filtering cartridge	activated carbon
Life of cartridge	Replacement against pressure drop higher than 0,75 bar. Anyhow, do not exceed 2,000 working hours. Saturation of activated carbon may not cause pressure drop.
Reference flow rate	see the flow chart
Working temperature (a 10 bar)	-5 / +50°C*
Max Torque IN-OUT	3/8" 60 Nm - 1/2" 80 Nm
Weight	0,230 kg

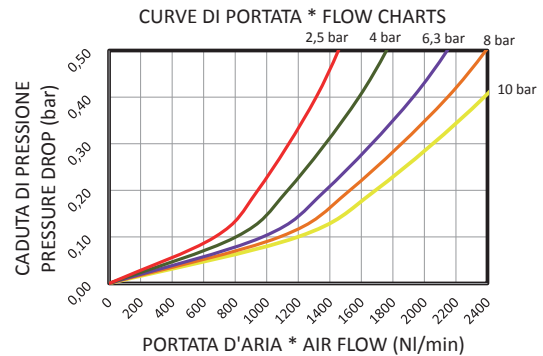
Below 3°C the air of the circuit must be free from humidity

ORDERING CODE

LINE 050-3/8	REF.
CODE	REF.
050.12.00.300	CF 050 3/8 CA PE
LINE 050-1/2	REF.
CODE	REF.
052.12.00.300	CF 052 1/2 CA PE

USED MATERIALS

1. Body - PA + BRASS
2. Carbon filter cartridge
3. Bowl - Toughened PA
4. O-ring - NBR
5. Brass insert



GUIDE TO REFERENCES

F 1/4" 042 20 PE SS

Product

F = Filter
MF = Microfilter
CF = Activated carbon

Connection

1/4" = G 1/4"
3/8" = G 3/8"
1/2" = G 1/2"
3/4" = G 3/4"
1" = G 1"

Line

042
050
052
075
080
095

Condensate Drain

SS = Semiautomatic (standard)
SA = Automatic float type
SAD = Automatic differential
S18 = Open seat 1/8 F

Bowl

TT = Transparent (Line 042 only)
TC = Short transparent (Line 042 only)
PE = With outer guard

Filtering element

5 = 5 micron
20 = 20 micron
0,01 = 0,01 micron
CA = Activated carbon