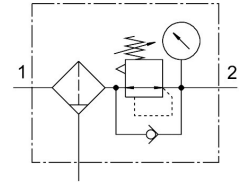


# Filter regulator MS2-LFR-QS6-D6-C-P-M-AR-BAR-B

Part number: 8086644

FESTO



 General operating condition

## Data sheet

Feature	Value
Size	2
Series	MS
Actuator lock	Rotary knob with detent
Mounting position	Vertical +/-5°
Grade of filtration	5 µm
Condensate drain	Manually rotating
Design	Filter regulator with pressure gauge
Max. condensate volume	3 ml
Controller function	Output pressure constant With secondary venting With return flow function
Symbol	00991589
Displayable units	bar psi
Pressure gauge (ANALOG) or Pressure display (DIGITAL)	With pressure gauge
Operating pressure	0.1 MPa ... 0.8 MPa
Operating pressure	1 bar ... 8 bar
Pressure regulation range	0.5 bar ... 7 bar
Max. pressure hysteresis	0.025 MPa
Max. pressure hysteresis	0.25 bar
Max. pressure hysteresis	3.625 psi
Standard nominal flow rate (standardised to DIN 1343)	310 l/min
Operating medium	Compressed air to ISO 8573-1:2010 [7:4:4] Inert gases
Corrosion resistance class CRC	1 - Low corrosion stress
LABS (PWIS) conformity	VDMA24364-B1/B2-L
Cleanroom class	Class 7 according to ISO 14644-1
Storage temperature	-5 °C ... 50 °C
Air purity class at output	Compressed air to ISO 8573-1:2010 [6:4:4]
Media temperature	-5 °C ... 50 °C
Ambient temperature	-5 °C ... 50 °C
Product weight	43.5 g
Type of mounting	Either: Front panel mounting In-line installation With accessories

<b>Feature</b>	<b>Value</b>
Pneumatic connection, port 1	QS-6
Pneumatic connection, port 2	QS-6
Note on materials	RoHS-compliant
Material seals	NBR
Material rotary knob	POM
Material spring	High-alloy steel
Material filter	PE
Material housing	PA-reinforced
Material membrane	NBR
Material bowl	PC
Material separating plate	POM
Material valve stem	Wrought aluminium alloy NBR