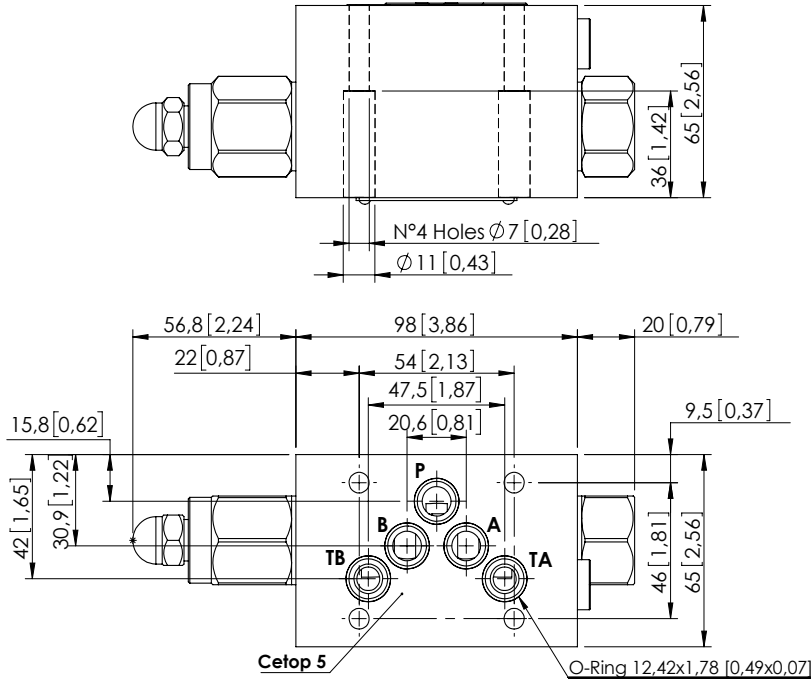
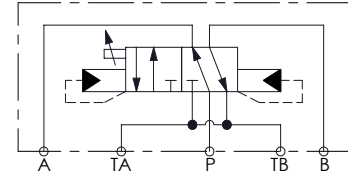


AUTOMATIC DIRECTIONAL VALVE

MDAF-080-ANNR

FLOW SWITCHING



Dimensions: mm [inches]

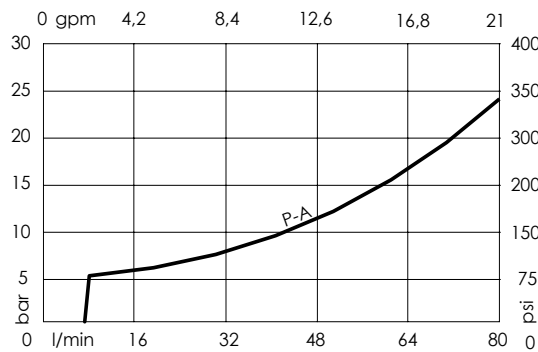
SPECIFICATIONS

| | |
|----------------------------------|---------------------------------------|
| Max. operating pressure: | 350 bar (5000 psi) |
| Rated flow: | 80 l/min (21 gpm) |
| Weight: | 3,12 kg (6,8 lbs) |
| Manifold: | Cast Iron |
| Contamination class to ISO 4406: | See technical spec. |
| MTF _d : | 150 - 1200 years: See technical spec. |

NOTES

- Minimum required flow: 6 l/min (1,6 gpm)
- Flexible pipe should be placed between valve and cylinder rod side. No suitable motor.
- For other configurations/quick codes not available in this catalogue page please consult factory

CURVES



ORDERING CODES

| Quick code | Description | Ports | |
|------------|---------------------------|----------------------|--|
| MD000034 | MDAF-080-ANNR-NP-N10-N350 | A,P,B,TA,TB: CETOP 5 | |
| | | | |
| | | | |
| | | | |
| | | | |

Revision A1