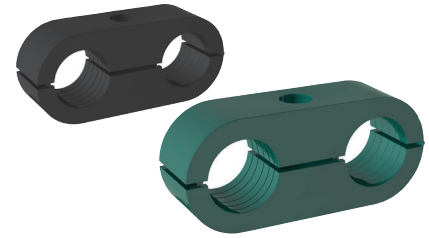
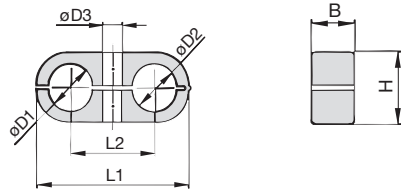


**Clamp Body - Twin Design
Type LNGF / LNUF**


Group STAUFF	Outside Diameters Pipe / Tube / Hose Ø D1 / Ø D2		Nominal Bore Pipe (in)	Ordering Codes (1 Clamp Body) (** = Material)	Dimensions (mm/in)				
	(mm)	(in)			L1	L2	B	H	Ø D3
1	6			LNGF-106/06-**-**	32	18	14,5	13,5	6,8
	6,4	1/4		LNGF-106.4/06.4-**-**	1.26	.70	.57	.53	.27
	8			LNGF-108/08-**-**					
2	8			LNGF-208/08-**-**					
	9,5	3/8		LNGF-209.5/09.5-**-**					
	10		1/8	LNGF-210/10-**-**	41	22	14,5	18,5	6,8
	12			LNGF-212/12-**-**	1.61	.86	.57	.73	.27
	12,7	1/2		LNGF-212.7/12.7-**-**					
3	10		1/8	LNGF-310/10-**-**					
	12			LNGF-312/12-**-**					
	12,7	1/2		LNGF-312.7/12.7-**-**					
	13,5		1/4	LNGF-313.5/13.5-**-**	54	30	14,5	23,5	6,8
	14			LNGF-314/14-**-**	2.13	1.18	.57	.93	.27
	15			LNGF-315/15-**-**					
4	16	5/8		LNGF-316/16-**-**					
	14			LNGF-414/14-**-**					
	15			LNGF-415/15-**-**					
	16	5/8		LNGF-416/16-**-**					
	17,2		3/8	LNGF-417.2/17.2-**-**	70	38	14,5	30,5	6,8
	18			LNGF-418/18-**-**	2.76	1.50	.57	1.20	.27
	19	3/4		LNGF-419/19-**-**					
	20			LNGF-420/20-**-**					
21,3		1/2	LNGF-421.3/21.3-**-**						
22			LNGF-422/22-**-**						

Ordering Codes
Clamp Body *LNGF-*1*06/06-*PP

- * Light Series: Clamp Body / Twin Design with identical diameters **LNGF**
- Clamp Body / Twin Design with different diameters **LNUF**
- * STAUFF Group **1**
- * Exact outside diameters Ø D1 / Ø D2 (mm) **06/06**
- * Material code (see below) **PP**

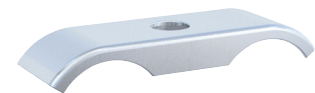
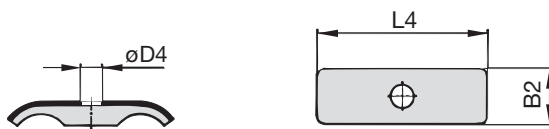
Standard Materials
Polypropylene
 Colour: Green
 Material code: **PP**
Polyamide
 Colour: Black
 Material code: **PA**

See pages 178 / 179 for material properties and technical information. Alternative materials are available upon request. Please contact STAUFF for further information.

Applications

- Pneumatics, Instrumentation and Automotive Technology, Machine Tool Industry, Lubrication, Mechanical Engineering

Additional outside diameters and combinations of different outside diameters (Clamp Body, type LNUF) are available upon request. Please contact STAUFF for further information.

**Cover Plate
Type DPL**


Group STAUFF	Dimensions (mm/in)			Ordering Codes (Standard Options)
	L4	B2	Ø D4	
1	29,5	15,5	6,8	DPL-1-W3
	1.16	.61	.27	
2	40	15,5	6,8	DPL-2-W3
	1.57	.61	.27	
3	51	16	6,8	DPL-3-W3
	2.01	.63	.27	
4	63,5	16	6,8	DPL-4-W3
	2.50	.63	.27	

Ordering Codes
Cover Plate *DPL-*1-*W3

- * Cover Plate for Clamp Body / Twin Design **DPL**
- * STAUFF Group **1**
- * Material code Carbon Steel, zinc/nickel-plated **W3**

Alternative materials and surface finishings are available upon request. Contact STAUFF for further information. Please note: The maximum tightening torque for bolts is 2,5 N·m (1.85 ft·lb).

