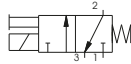


Solenoid valve S and S/1

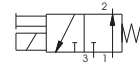


Weight 220 gr.

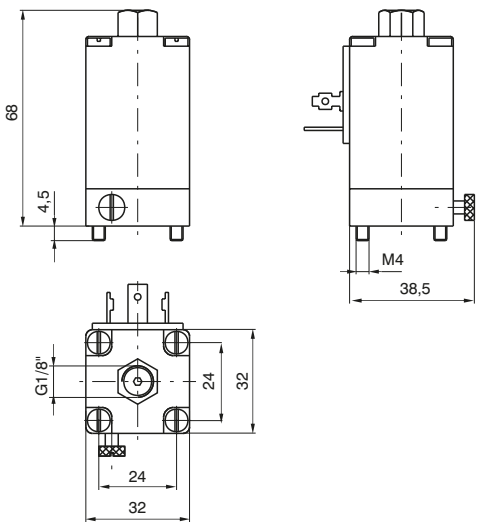
Normally Closed
(N.C.) - S



Normally Open
(N.O.) - S/1



1
AIR DISTRIBUTION

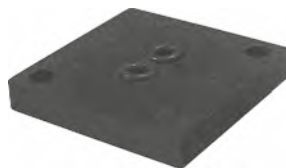


Ordering code		Available voltages Coil	
S 2 S 4 S 5 S 6	S 2/1 S 4/1 S 5/1 S 6/1	6 D.C. 12 D.C. 24 D.C. 48 D.C.	Direct current
S 16 S 17 S 19 S 20 S 21 S 22 S 23 S 24	S 16/1 S 17/1 S 19/1 S 20/1 S 21/1 S 22/1 S 23/1 S 24/1	12/50 24/50 32/50 42/50 48/50 110/50 115/50 230/50	Alternating current 50 Hz
S 36 S 37 S 38 S 39 S 40 S 41	S 36/1 S 37/1 S 38/1 S 39/1 S 40/1 S 41/1	12/60 24/60 48/60 110/60 115/60 230/60	Alternating current 60 Hz
S 56 S 57 S 58	S 56/1 S 57/1 S 58/1	24/50-60 110/50-60 230/50-60	Alternating current 50/60 Hz

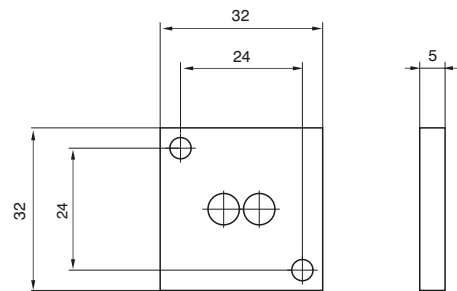
Closing plate

Ordering code

300.12.00



Weight 14 gr.

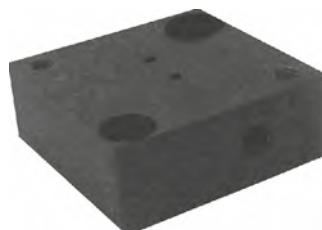


External feeding base

To be used with electrodistributeur to get a different piloting pressure from the line one.

Ordering code

300.10.05



Weight 35 gr.

