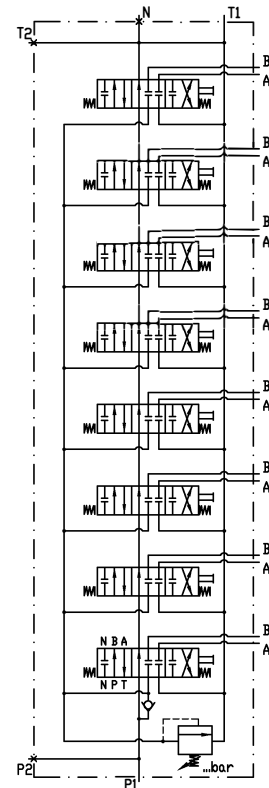
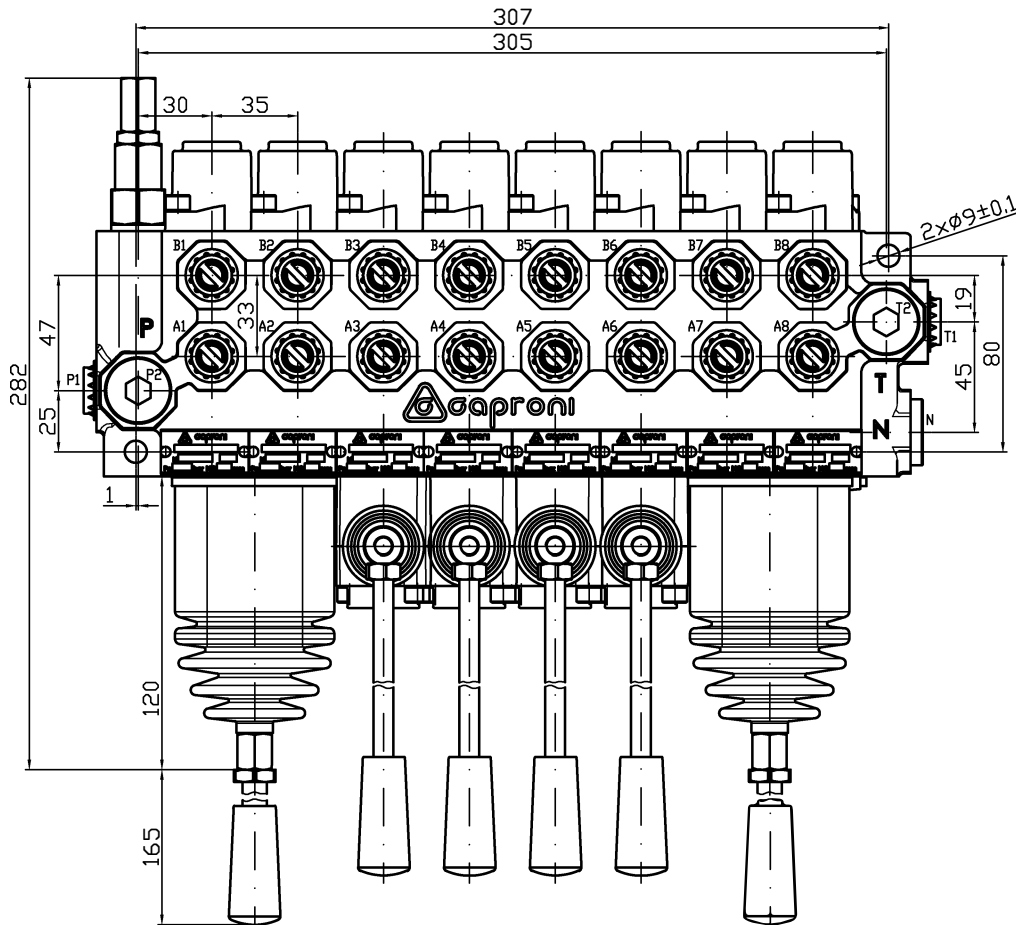


Scheme



Nominal flow – 40 l/min
 Max. pressure – P=250bar; A,B=300bar; T=50bar
 Pressure control valve setting range – 5...250bar
 Spool working stroke – ±6 mm
 Spool leakage at p=120bar, t=40°C and viscosity 46cSt –
 max 8cm³/min

Valve body – Zinc plated, Cr(VI)-free
 Weight – 13.45 kg
 Port threads:
 P1, P2, T1, T2, N – G1/2
 A, B – G3/8