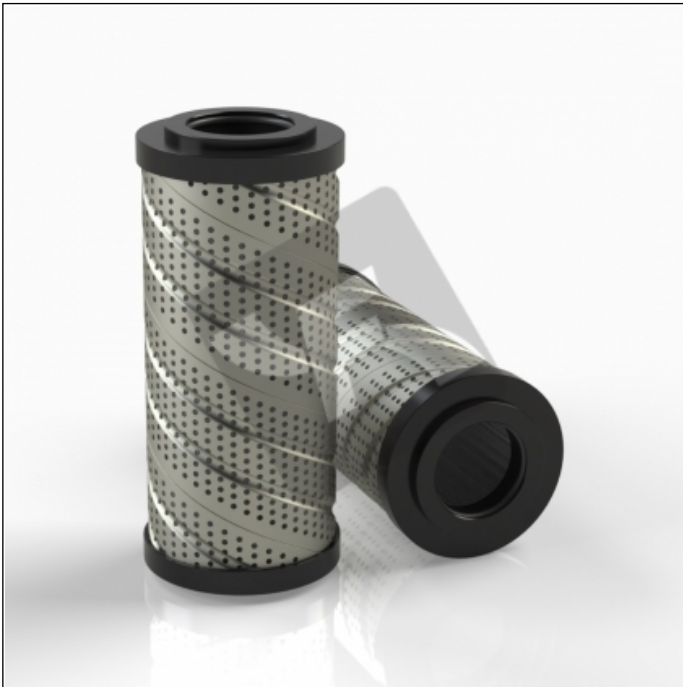


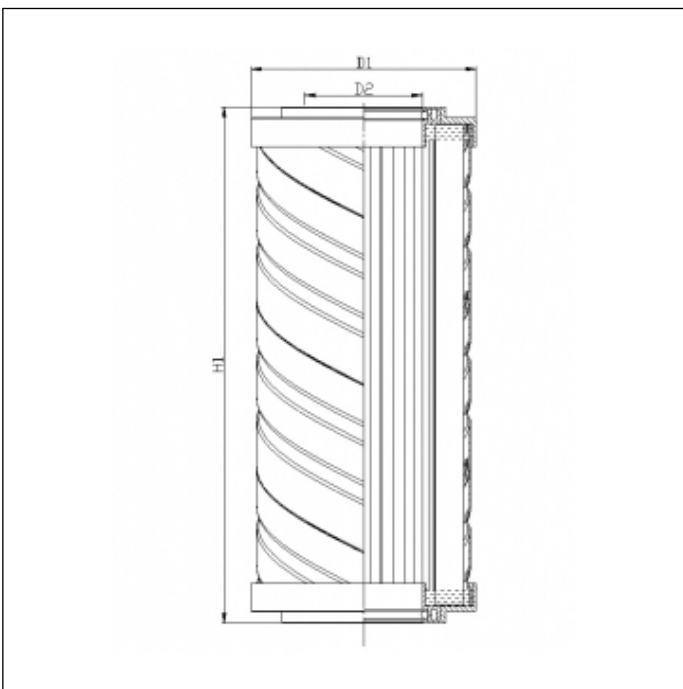
S741C10

printed on: 28-12-2024



TECHNICAL INFO

| | |
|-------------------|---|
| Media type | IMPREGNATED PAPER |
| Efficiency | 10 $\mu\text{m}_{(c)}$ $\beta_x \geq 2$ |
| Flow direction | IN-OUT |
| Burst Δp | 3 bar |
| Seals | NBR |
| Temperature range | -30°C +100°C |



OVERALL DIMENSIONS

| | |
|----|----------|
| D1 | 99,0 mm |
| D2 | 51,5 mm |
| H1 | 227,0 mm |

Technical information may change without notice. Image and drawing are representative only