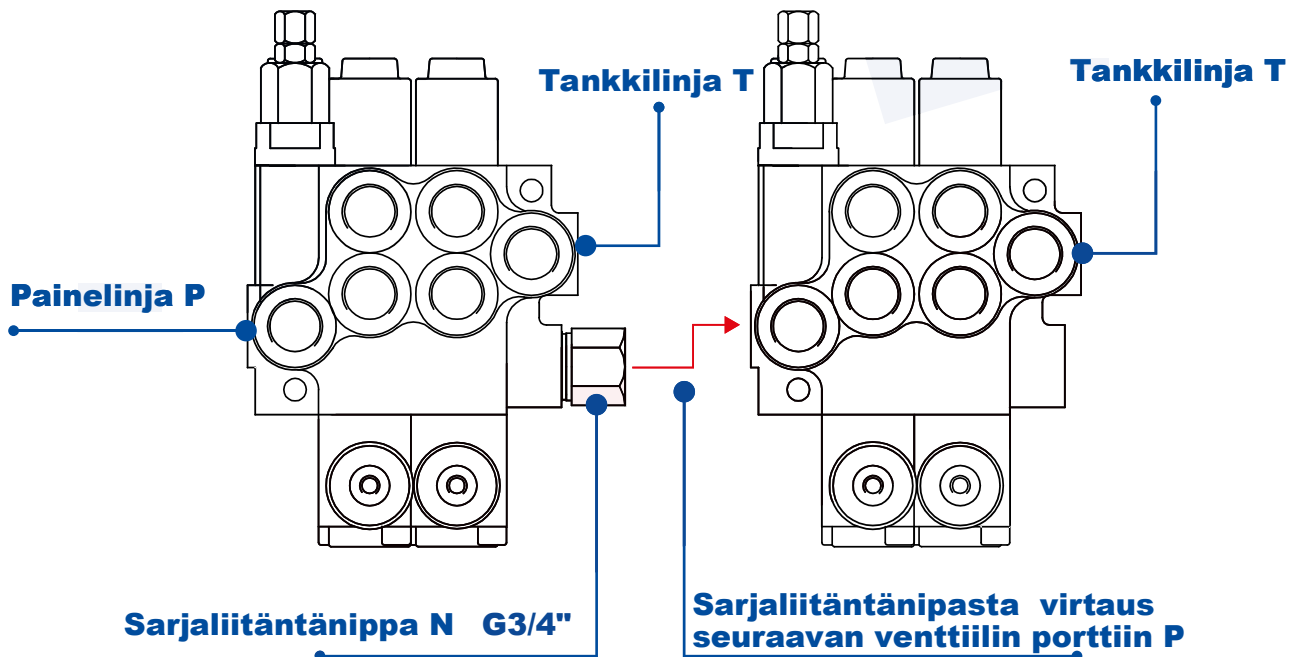
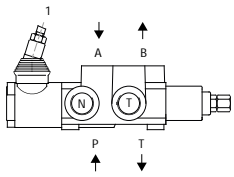




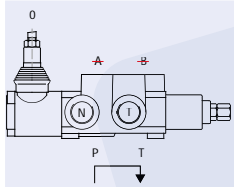
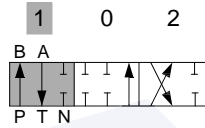
Venttiilin kytkeminen sarjaan sarjaliitântänipalla



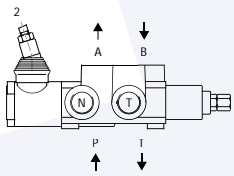
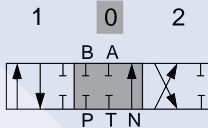
A: sylinterikara, portit A ja B tulpassa keskellä



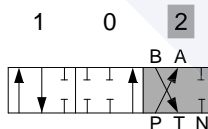
P -> B
A -> T
N kiinni



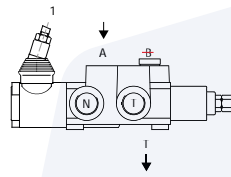
P & T & A & B kiinni
N auki



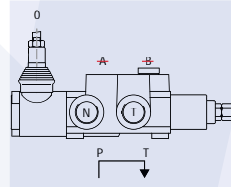
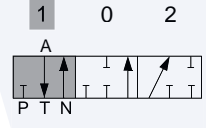
P -> A
B -> T
N kiinni



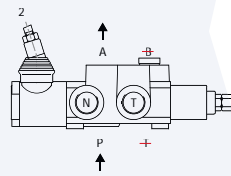
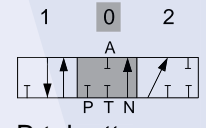
B: yksitoimikara, portti A käytössä ja portti B tulpattu



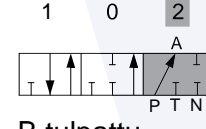
A -> T
N kiinni



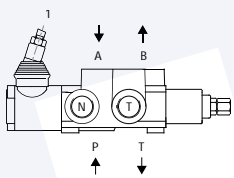
P & A & T kiinni
N auki



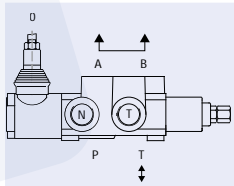
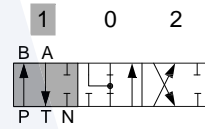
P -> A
N auki



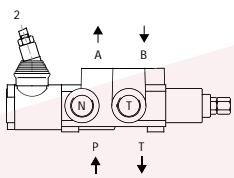
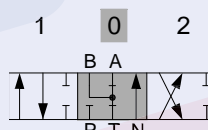
D: moottorikara, portit A ja B tankkiin keskiasennossa



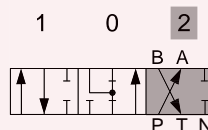
P -> B
A -> T
N kiinni



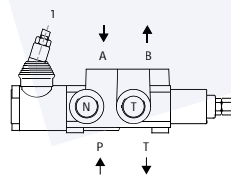
A & B -> T
P kiinni
N auki



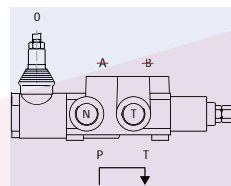
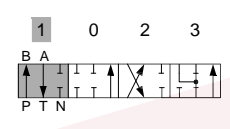
P -> A
B -> T
N kiinni



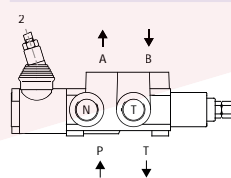
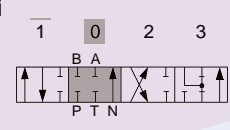
K: 4-asentokara, kellunta vivusta vedettäessä



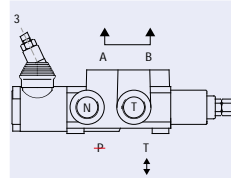
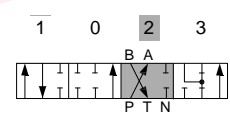
P -> B
A -> T
N kiinni



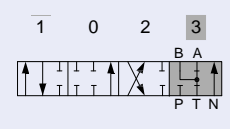
P & T & A & B kiinni
N auki



P -> A
B -> T
N kiinni



A & B -> T
P kiinni
N auki



Ohjausvaihtoehdot

- | | | |
|----|---|--|
| 1 | Jousipalautus keskellä | |
| 2 | Kuulapidätys vedettäessä | |
| 3 | Kuulapidätys työnnettäessä | |
| 8 | Kuulapidätys molemmissa päätyasennoissa | |
| 16 | Lukitus, uivassa neljännessä asennossa | |