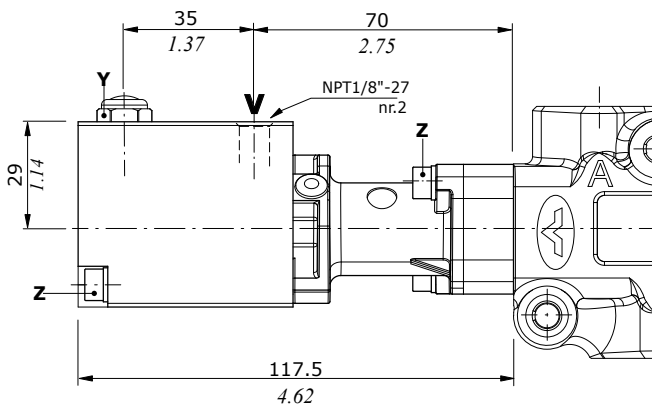
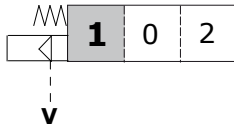


"A" side spool positioners

ON/OFF pneumatic controls

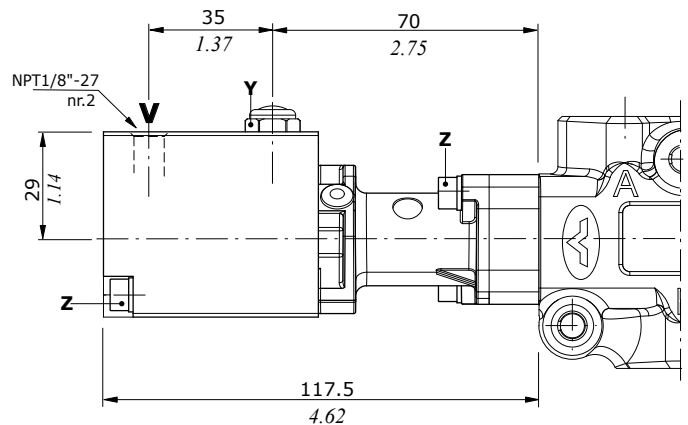
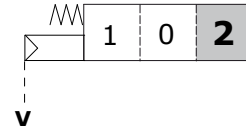
Type 17PNB

Spring return in pos. 1, waterproof type



Type 18PNB

Spring return in pos. 2, waterproof type



Wrenches and tightening torque

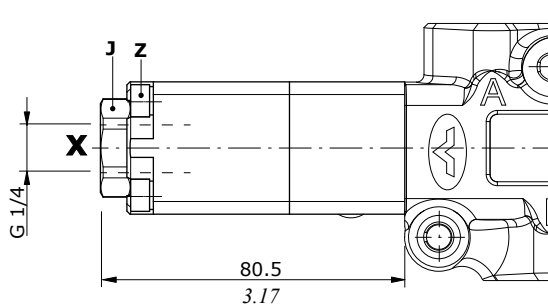
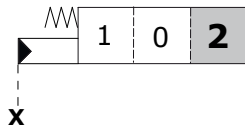
Z = wrench 4 - 6.6 Nm (4.9 lbf ft)

Y = wrench 13 - 9.8 Nm (7.2 lbf ft)

Hydraulic controls

Type 18IA1

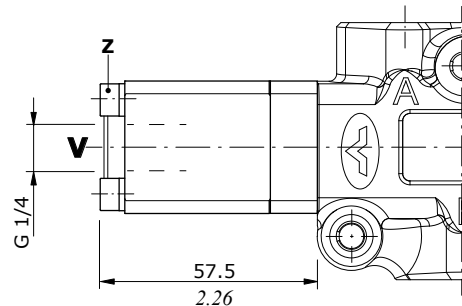
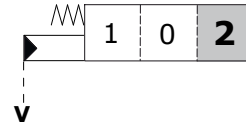
High pressure hydraulic control with spring return in position 2



Pilot pressure max. = 250 bar (3620 psi)

Type 18IB1N

Low pressure hydraulic control with spring return in position 2



Pilot pressure max. = 50 bar (725 psi)

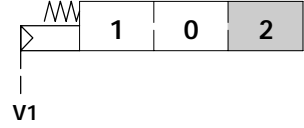
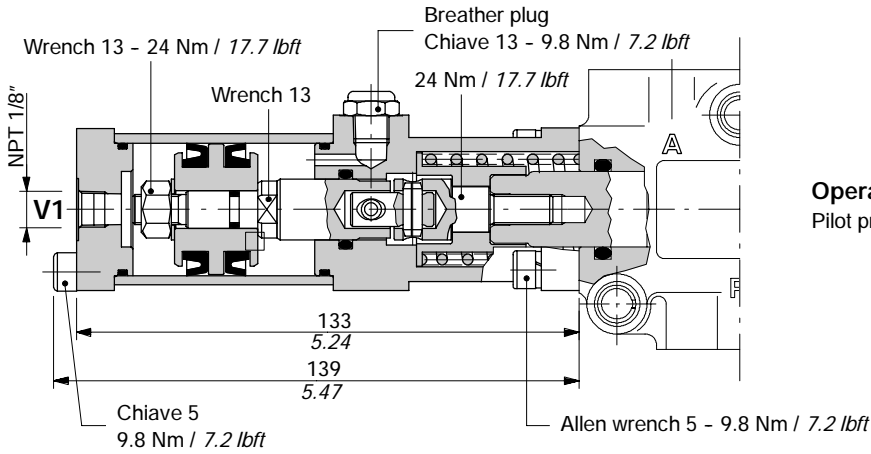
Wrenches and tightening torque

Z = wrench 4 - 6.6 Nm (4.9 lbf ft)

J = wrench 24 - 42 Nm (31 lbf ft)

ON/OFF pneumatic kit type 18P

With spring return in position 2.



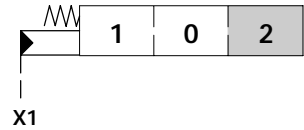
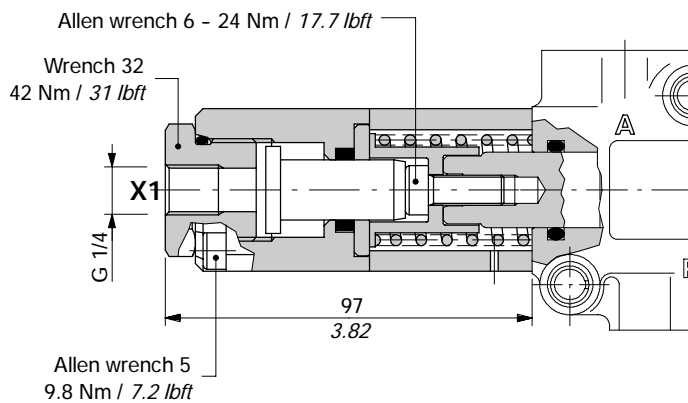
Operating features

Pilot pressure : min. 6 bar / 87 psi
max. 10 bar / 145 psi

With ON/OFF hydraulic control

18IA1 kit

With high pressure pilot and spring return to position 2.

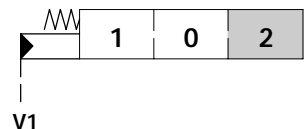
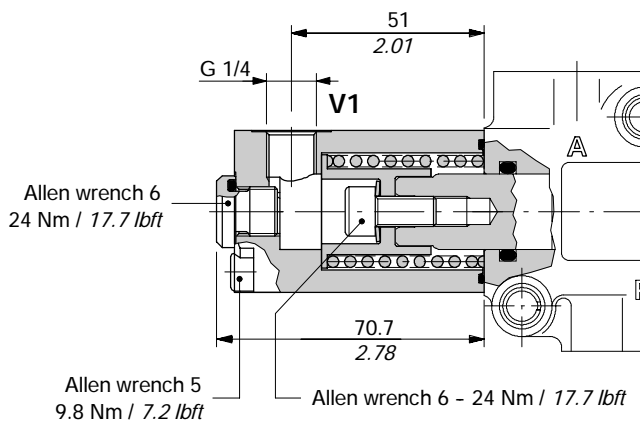


Operating features

Pilot pressure : min. 30 bar / 435 psi
max. 250 bar / 3600 psi

18IB1 kit

With low pressure pilot and spring return to position 2.



Operating features

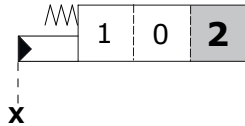
Pilot pressure : min. 15 bar / 220 psi
max. 50 bar / 725 psi

"A" side spool positioners

Hydraulic controls

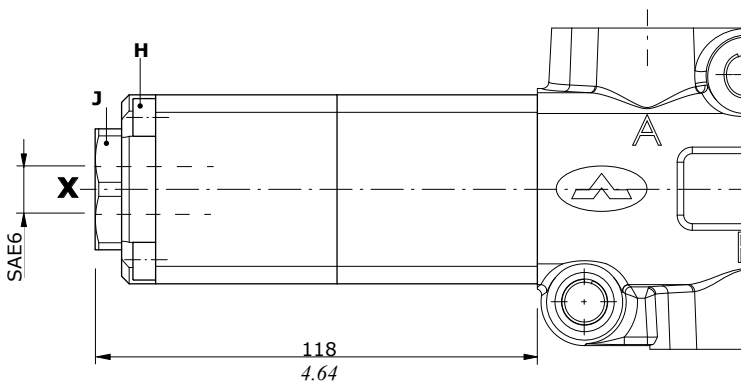
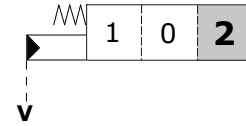
Type 18IA1

High pressure hydraulic kit with
spring return in position 2

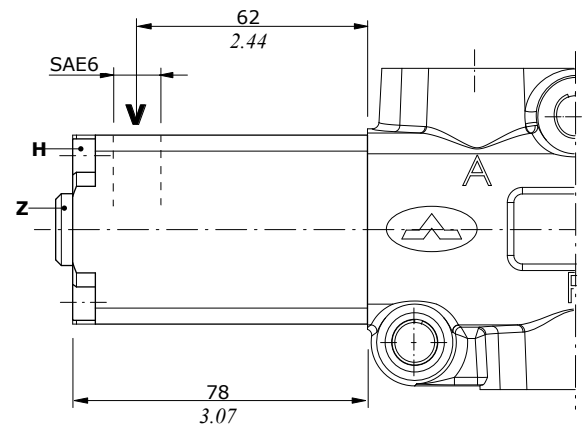


Type 18IB1

Low pressure hydraulic kit with
spring return in position 2



Pilot pressure max. = 250 bar (3620 psi)



Pilot pressure max. = 50 bar (725 psi)

Wrenches and tightening torque

H = wrench 5 - 9.8 Nm (7.2 lbf^t)

Z = wrench 6 - 24 Nm (17.7 lbf^t)

J = wrench 32 - 42 Nm (31 lbf^t)