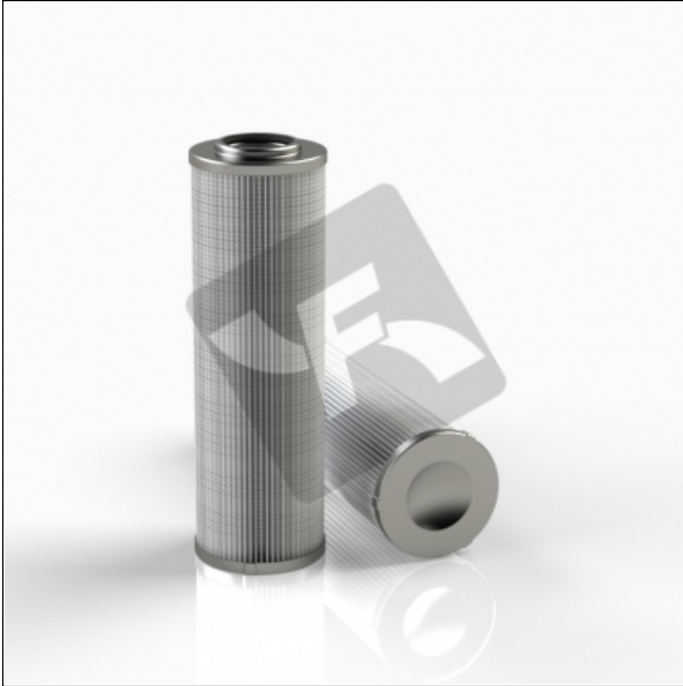


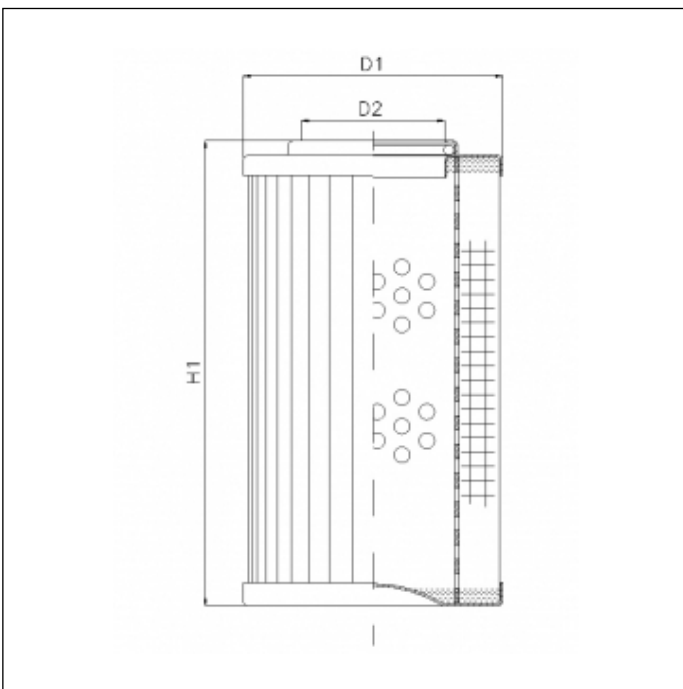
XD063G06A

printed on: 02-02-2025



TECHNICAL INFO

Media type	INORGANIC FIBERGLASS
Efficiency	5 $\mu\text{m}_{(c)}$ $\beta_x \geq 200$
Efficiency 1	7 $\mu\text{m}_{(c)}$ $\beta_x \geq 1000$
Flow direction	OUT-IN
Collapse Δp	21 bar
Seals	NBR
Temperature range	-30°C +100°C



OVERALL DIMENSIONS

D1	44,5 mm
D2	22,3 mm
H1	157,0 mm