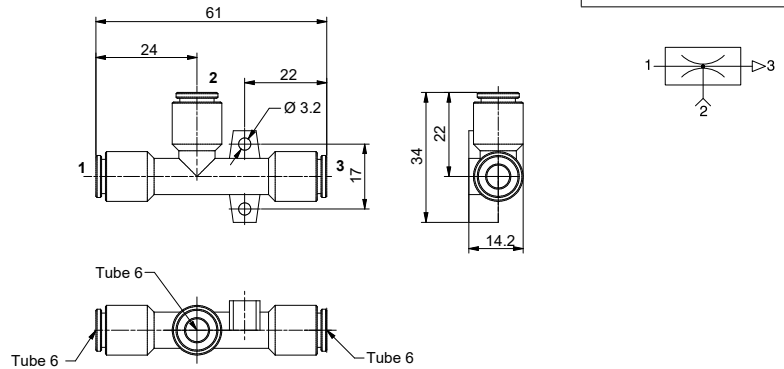


Single stage vacuum generator T06

Ordering code  
**19T06.S.07.HV.ZZ**



Single stage generators, robust and reliable, with compact dimensions and suitable for applications that need the required degree of vacuum to be reached quickly with limited air flows. Operating on the Venturi principle they have the vacuum connection orthogonal to the axis of supply and outlet. They can be connected directly to the suction cups and/or suction cup holder and can be applied in any position.

Operational characteristics			
Inlet pressure (bar)	2	4	6
Degree of Vacuum (-kPa)	36	87	91
Intake flow rate (l/min)	10	10	10
Air consumption (l/min)	22	30	38

**Degree of vacuum**

**Air intake**

**Air consumption**

**Emptying time (1 L.)**

**Intake flow rate**

Technical characteristics	
Fluid	Unlubricated filtered air
Pressure (bar)	1 ... 8
Temperature (°C)	-10 ... +80
Weight (g)	12
Noise (dBA)	76

VACUUM GENERATORS

Performance Charts